

ASSEMBLY INSTRUCTION  
MODEL : DROP LEAF TABLE

Assembly Tips Remove hardware from box and sort by size.

1. Please check to see that all hardware and parts are present prior start of assembly.
2. Please follow attached instruction in the same sequence as numbered to assure fast and easy assembly.

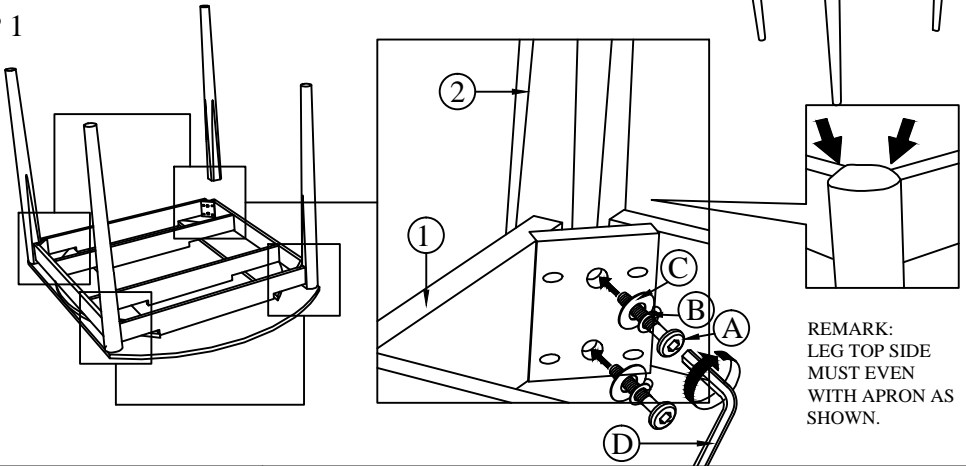
IMPORTANT NOTE

1. Place all wooden parts in a clean and smooth surface such as a rug or carpet to avoid the parts from being scratched.  
Before you being, kindly follow the assembly instruction step by step.
2. Do not tighten all screw until the product is fully set-up.

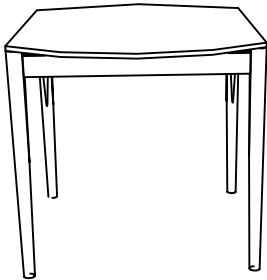
HARDWARE LIST			
ITEM	DESCRIPTION		QTY
A	JCBC SCREW	M8 X 70MM 	8 PCS
B	SPRING WASHER	M8 x 12 x 2.0MM 	8 PCS
C	FLAT WASHER	M8 x 22 x 1.0M 	8 PCS
D	ALLEN KEY M5		1 PC

PART LIST		
ITEM	DESCRIPTION	QTY
1	TABLE TOP 桌面	1 PC
2	TABLE LEG 桌脚	4 PCS

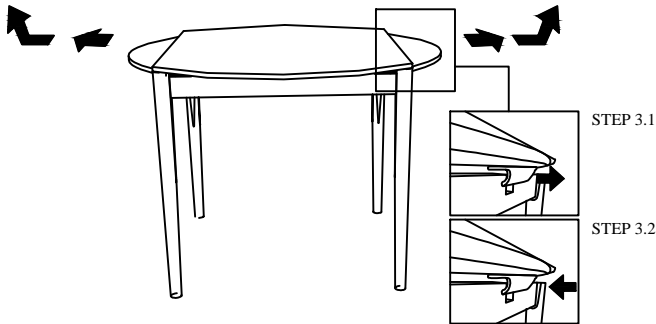
STEP 1



STEP 2



STEP 3



STEP 3.1 PULL OUT THE SIDE LEAF TABLE  
THEN LIFT IT UPWARD GENTLY TO EXTEND.  
STEP 3.2 PULL IT DOWNWARD AND BRING  
INSIDE TO STORAGE THE SIDE LEAF.