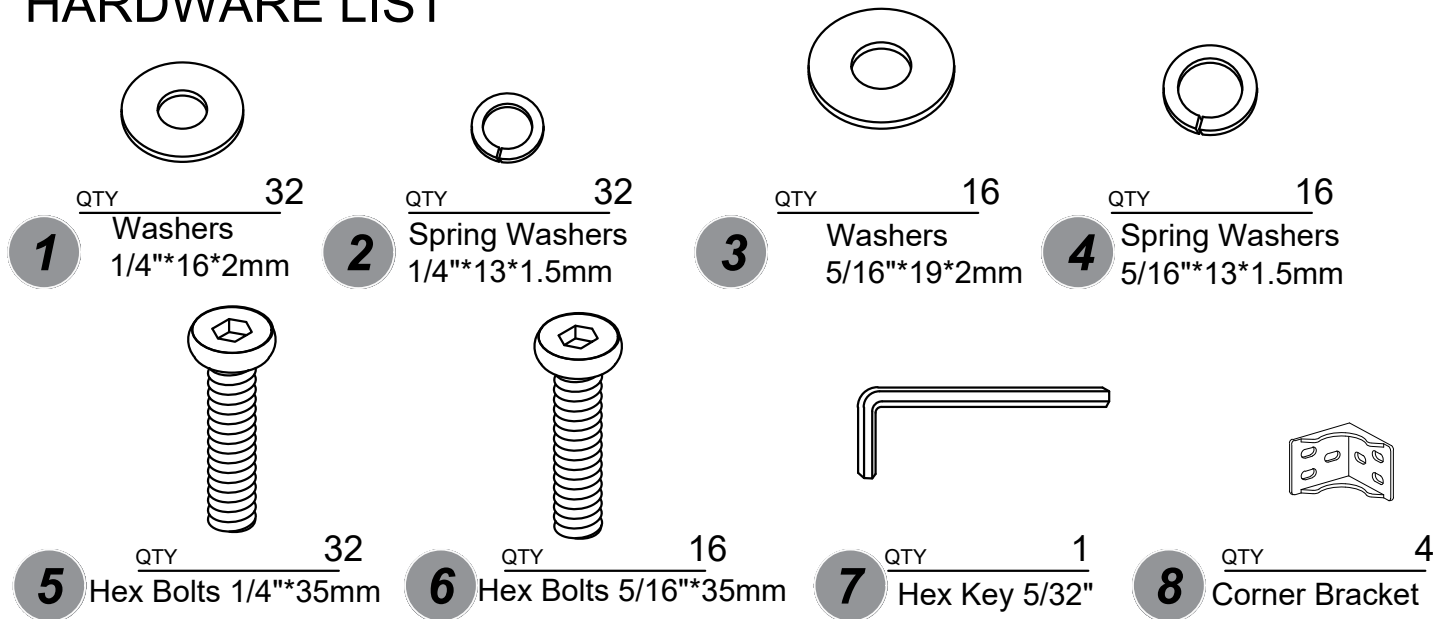


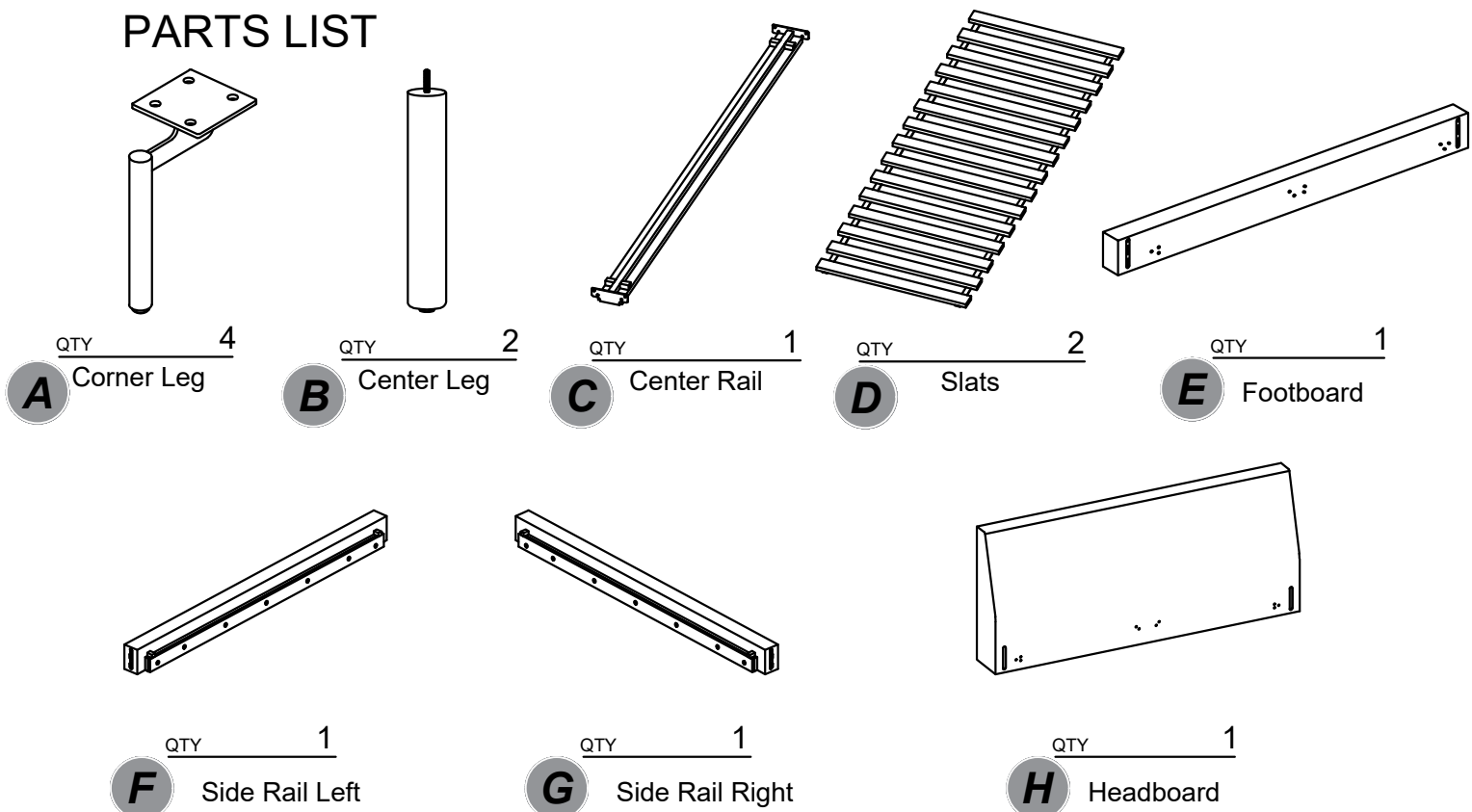
# B180 King + Queen Bed Assembly Instructions

- Two adults are required for assembly of this product.
- DO NOT use any sharp objects to open plastic wrapped components as damage to product or components may result.
- Carefully remove all of the components from the packaging and set aside for assembly.
- Assemble on a soft surface to prevent scratching the finish.
- About your furniture piece:
  - Softening of foam is natural and will happen over time with use.
  - Fabric will fade or discolor in direct sunlight. Minimize exposure to direct sunlight to extend the life of your furniture.
  - Wood grain, knots, streaks, and color variation occur naturally in wood and are not considered defects.

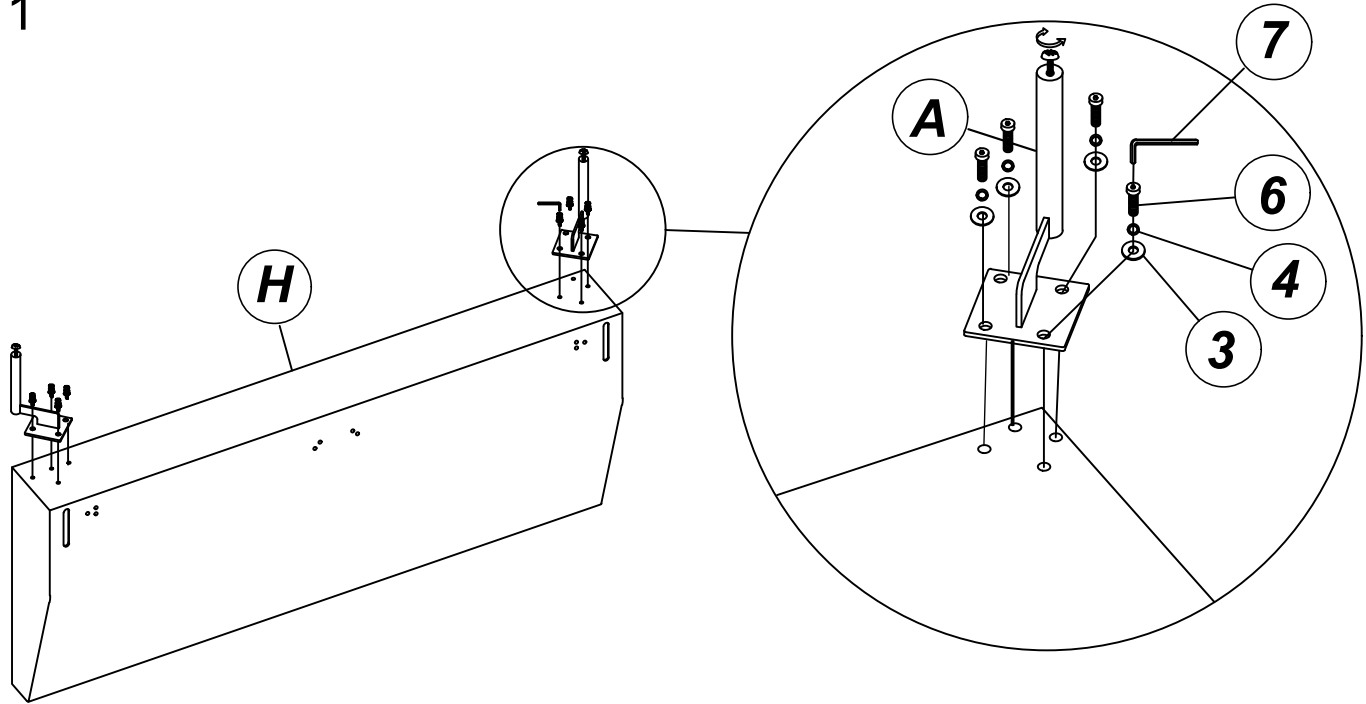
## HARDWARE LIST



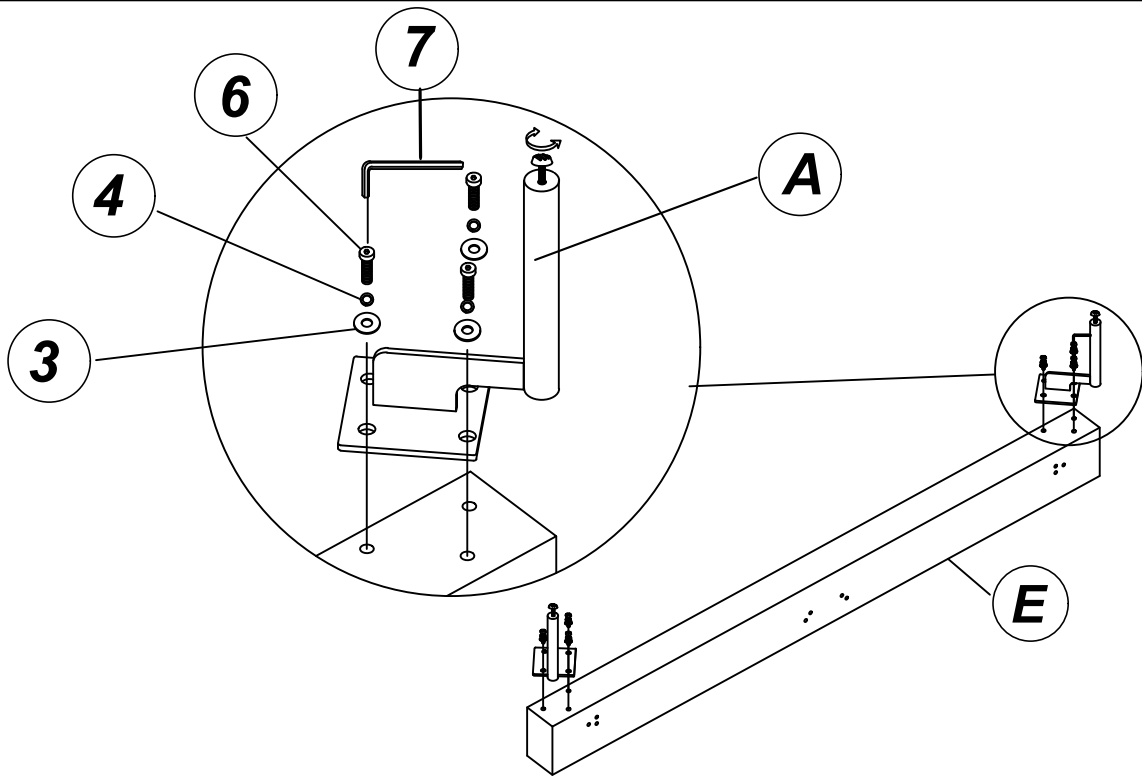
## PARTS LIST



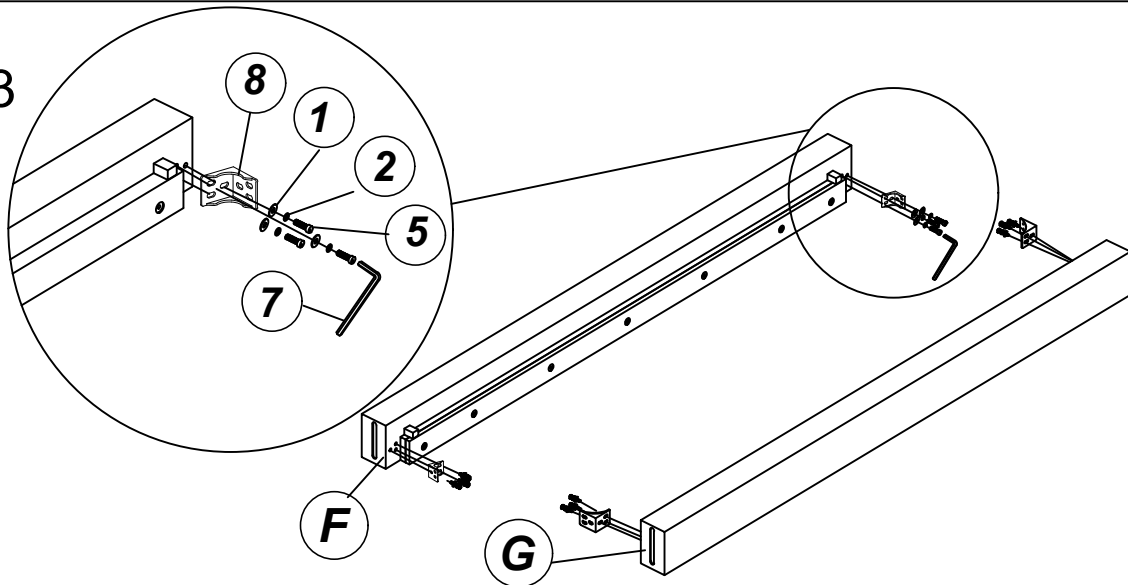
Step 1



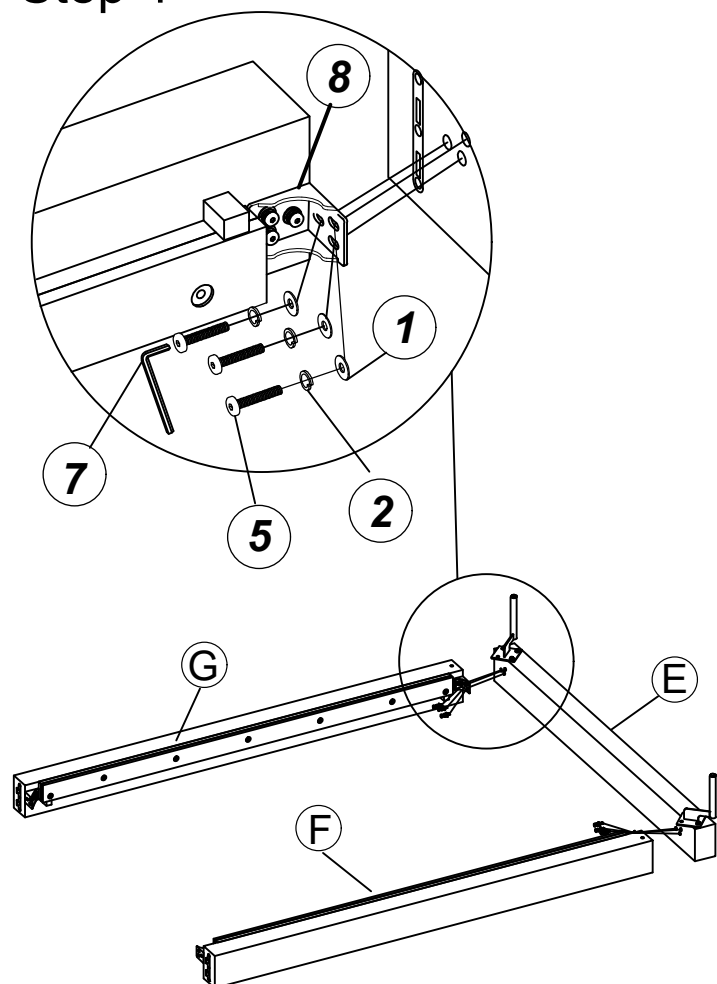
Step 2



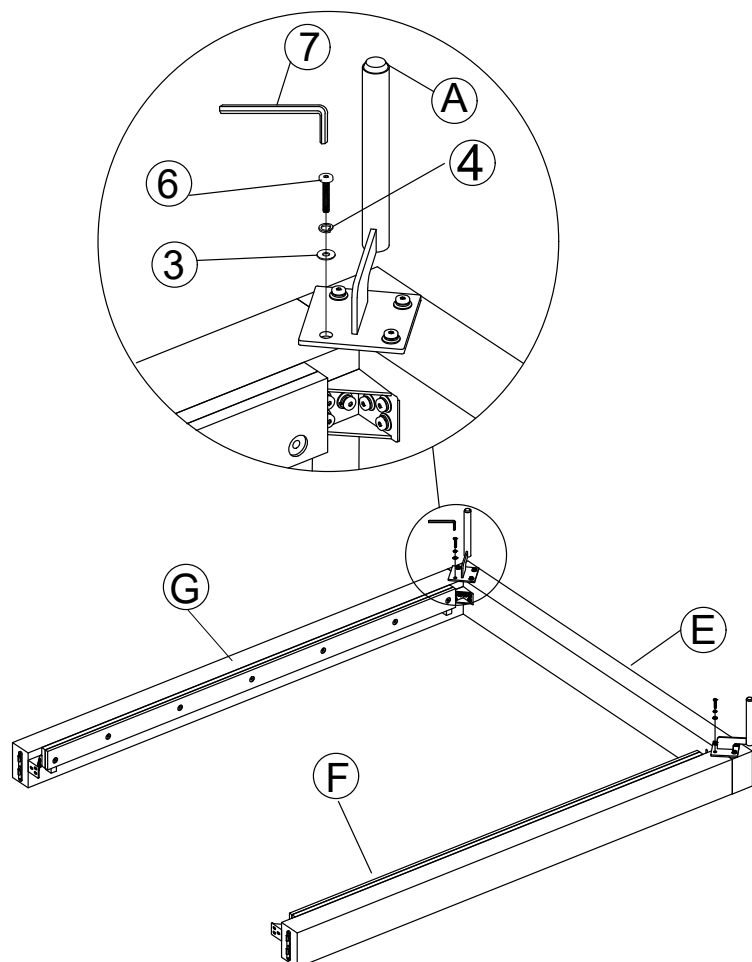
Step 3



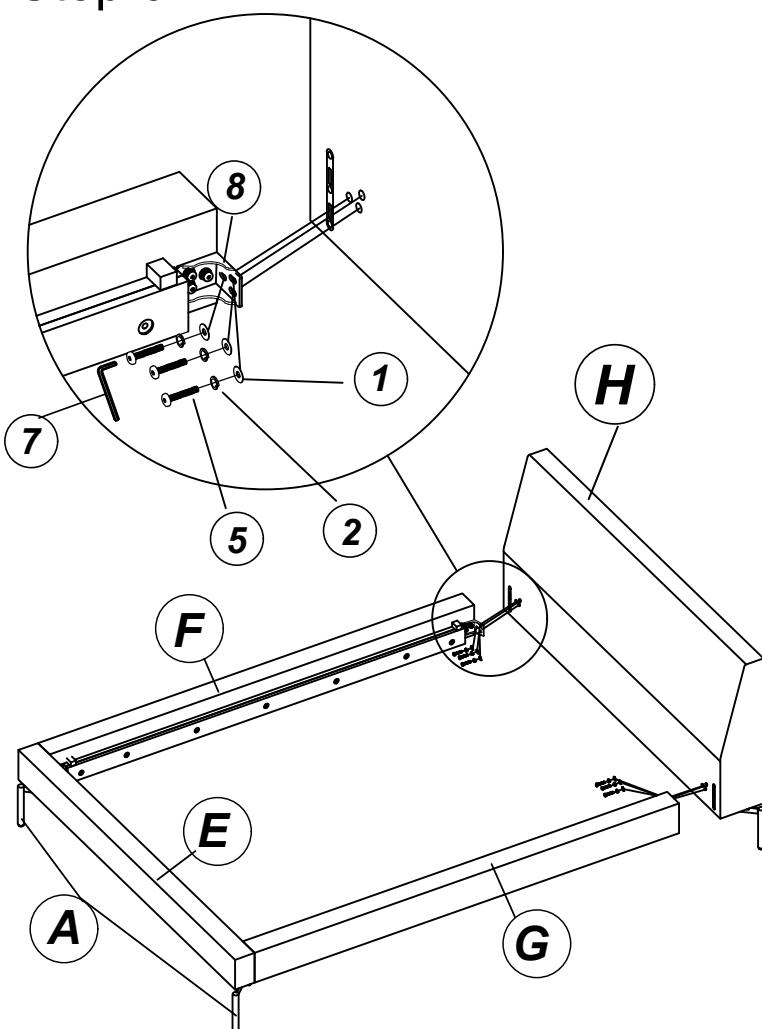
## Step 4



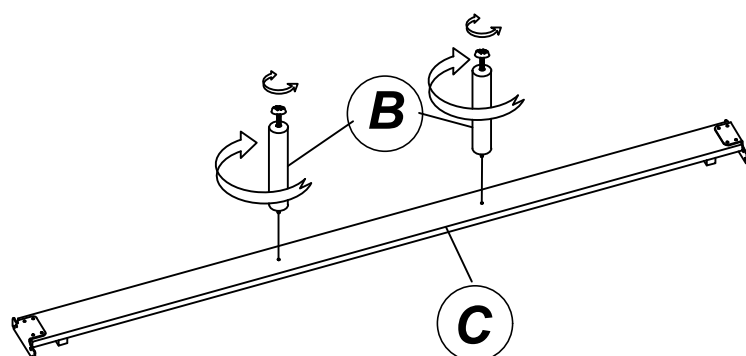
## Step 5



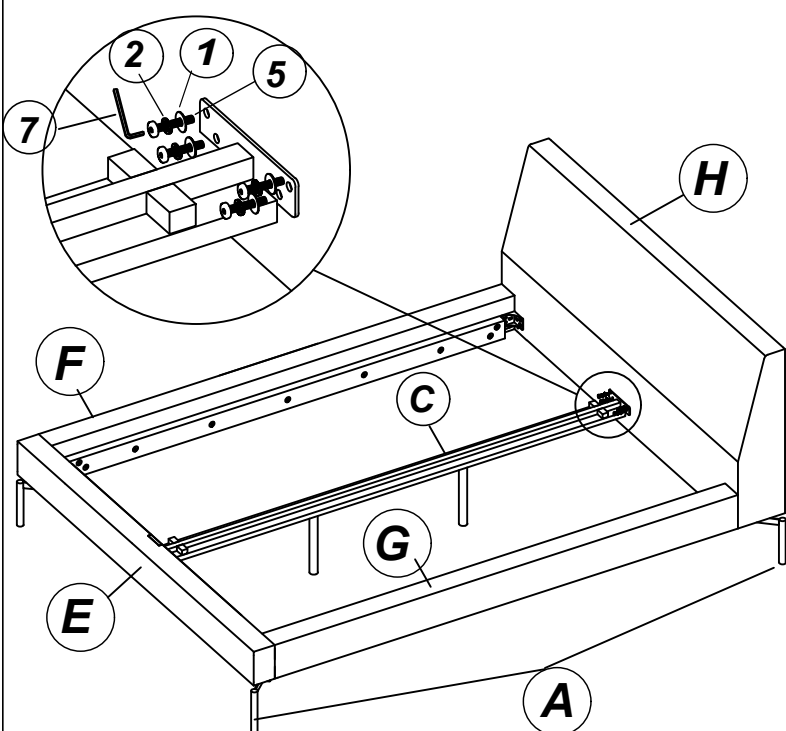
## Step 6



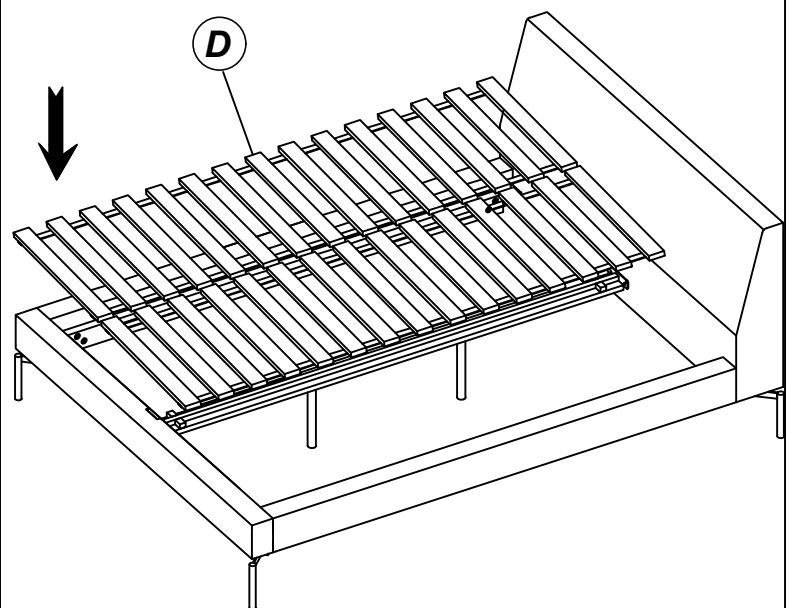
## Step 7



## Step 8



## Step 9



## FINISH

